

FIT TO PRINT

.....

SmartFabric™ is a triple layered fabric made of 100% polyester that's ideal for printed graphics. It's an extremely versatile all-in-one fabric and has been treated to meet NFPA 701 small-scale flammability standards.



Your Marketing Message Here

SMARTFABRIC™ RENTAL EXHIBITS



10 x 10 ft. unit

FRAME

117"W 93.5"H



10 x 20 ft. unit

FRAME

234"W 93.5"H

MAGNETIC SHELVES

clear acrylic

36"W 12"H .25"D

(up to 15lbs each)

RENTAL EXHIBITS INCLUDE:

- Custom Fabric Graphic (item purchased to keep)
- Carrying Case for Fabric Graphic (item purchased to keep)
- Rental Frame
- 9'x10' or 9'x20' Classic Carpet (select color below)
- Exhibit Installation & Dismantle
- Exhibit Material Handling
- Nightly Vacuuming
- 2-Arm Light/10', 4-Arm Light/20'
- 2 Clear Acrylic Shelves/10' (36"x12", up to 15 lbs.), 4 Clear Acrylic Shelves/20' (36"x12", up to 15 lbs.)
- Power (500 watts) for LIGHTS only (and Labor to hang lights)

9'x10' or 9'x20' Classic Carpet (16 oz.) – Color Options Included with Rental Package Options Above



black



blue



grey



green



latte



midnight blue



plum



red



red pepper



tuxedo

9' carpet is laid toward the front edge, leaving 1' at the back of the booth for utility port access.

CUSTOM GRAPHICS

A Freeman Exhibitor Sales Specialist will be contacting you to review the process for providing graphic files and to review helpful tips that will ensure a successful graphic print.

FRAME ONLY UNIT

This option is available for customers who have previously rented the SmartFabric™ Rental Exhibit and are reusing their graphics. Fabric from other sources will not be installed on this Freeman frame rental. If you need Freeman to create a new graphic, please select the SmartFabric™ Rental Exhibit. No fabric graphics will be provided separate from the rental unit.



10 x 10 ft. frame



10 x 20 ft. frame

RENTAL EXHIBITS INCLUDE:

- Rental Frame
- 9'x10' or 9'x20' Classic Carpet (select color below)
- Exhibit Installation & Dismantle
- Exhibit Material Handling
- Nightly Vacuuming
- 2-Arm Light/10', 4-Arm Light/20'
- 2 Clear Acrylic Shelves/10' (36"x12", up to 15 lbs.), 4 Clear Acrylic Shelves/20' (36"x12", up to 15 lbs.)
- Power (500 watts) for LIGHTS only (and Labor to hang lights)

Prestige Carpet (28 oz.) – Available Upgrade Color Options



black*



cardinal



charcoal*



cream



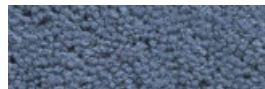
grey pearl*



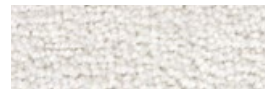
navy*



toast



wedgewood



white*

*Colors available in both 28 oz. and 40 oz.