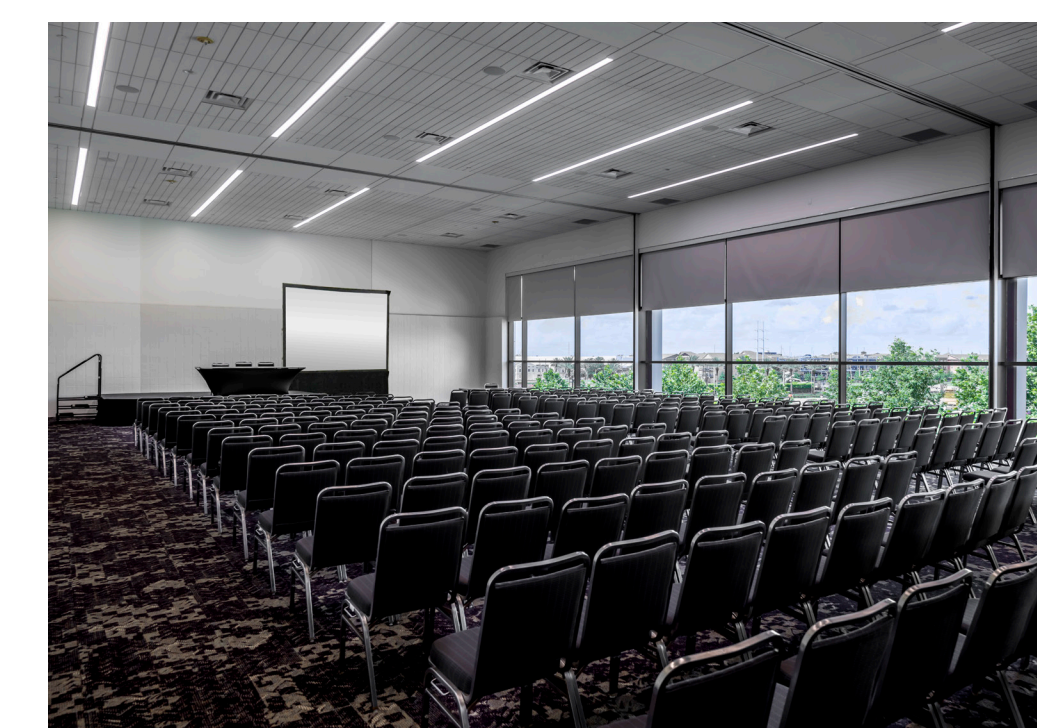


Meeting Room Seating Capacities and Combinations

Room	Sq. Ft.	Theater	Classroom	Rounds	Ceiling	Room	Sq. Ft.	Theater	Classroom	Rounds	Ceiling	Room	Sq. Ft.	Theater	Classroom	Rounds	Ceiling	Room	Sq. Ft.	Theater	Classroom	Rounds	Ceiling	Room	Sq. Ft.	Theater	Classroom	Rounds	Ceiling
R01	1,934	218	117	110	16'	217-219	5,025	508	288	390	19'	253	1,283	128	72	50	19'	278-282	6,368	611	309	320	13'	340	916	50	36	30	16'
R02	2,550	228	135	120	24'	220	1,613	180	72	80	19'	254	1,266	112	72	50	19'	283	1,245	119	71	40	18'	341	914	50	36	30	16'
R03	2,500	227	135	110	24'	221	1,730	193	96	80	19'	252-254	3,837	408	204	200	19'	284	1,287	119	72	40	18'	340-341	1,830	140	60	70	16'
R04	2,535	239	135	120	24'	222	1,818	193	96	80	19'	255	1,293	120	72	50	19'	285	1,159	102	54	30	18'	342	1,690	150	69	60	16'
R05	2,525	231	135	120	24'	220-222	5,161	547	258	330	19'	256	1,279	120	72	50	19'	283-285	3,691	321	177	170	18'	343	2,377	209	111	110	22'
R02-R05	10,110	1,136	591	580	24'	223	1,375	142	72	70	16'	257	1,207	128	72	50	19'	286	1,485	136	72	40	20'	344	2,437	209	111	110	22'
R06	2,565	231	117	110	24'	224	1,873	162	90	110	16'	255-257	3,779	408	189	200	19'	287	1,419	128	72	40	20'	345	2,383	209	111	110	22'
R07	2,540	231	138	120	24'	225	1,107	99	51	40	19'	260	1,842	195	108	80	19'4"	286-287	2,904	252	144	140	20'	343-345	7,197	800	372	480	22'
R08	2,505	228	138	120	24'	226	1,148	99	51	40	19'	261	1,905	195	108	80	19'4"	288	1,563	153	96	60	20'	346	1,267	89	45	40	19'
R09	2,960	264	138	150	24'	227	1,251	124	60	40	19'	262	1,831	195	108	80	19'4"	289	1,607	161	96	60	20'	347	1,267	89	45	40	19'
R06-R09	10,570	1,220	546	580	24'	225-227	3,506	342	168	230	19'	260-262	5,578	421	222	230	19'4"	290	1,643	172	96	60	20'	348-347	2,534	210	96	110	19'
202	2,005	149	64	90	16'	228	1,151	97	45	40	19'	263	1,684	176	96	80	19'4"	288-290	4,813	473	249	240	20'	348	1,080	91	45	40	16'
203	985	70	27	40	19'	229	1,292	144	84	80	19'	264	1,494	149	84	60	19'4"	291	2,471	267	156	110	20'	349	1,083	91	45	40	16'
204	1,150	94	45	40	19'	230	1,401	137	75	60	19'	265	1,554	175	81	60	19'4"	292	2,422	273	162	110	20'	348-349	2,163	202	90	120	16'
205	1,305	119	48	50	19'	228-230	3,844	442	192	250	19'	266	1,608	177	81	60	19'4"	291-292	4,893	446	276	260	20'	350	1,083	96	45	40	16'
203-205	3,438	289	117	180	19'	231	1,095	105	42	40	16'	267	1,608	173	81	60	19'4"	293	2,510	264	156	110	20'	351	1,085	92	45	40	16'
206	2,530	257	138	110	19'	232	1,018	99	45	40	16'	268	1,509	163	81	60	19'4"	294	2,442	268	162	110	20'	350-351	2,168	202	90	120	16'
207	1,901	195	90	80	19'	231-232	2,113	183	84	90	16'	265-268	6,279	613	336	310	19'4"	295	2,481	266	162	110	20'	352	2,756	255	120	130	16'
206-207	4,431	432	228	220	19'	235	1,082	84	48	30	16'	269	1,252	120	57	40	19'4"	296	2,373	254	162	110	20'	353	1,972	187	78	90	19'
208	1,657	178	81	90	19'	236	928	90	36	30	16'	270	1,651	173	90	60	19'4"	293-296	9,806	975	543	530	20'	354	1,926	187	99	90	19'
209	1,745	171	75	90	19'	235-236	2,010	178	78	80	16'	271	1,916	207	119	80	19'4"	297	1,494	168	87	60	20'	355	1,972	189	78	90	19'
210	2,120	243	117	110	19'	237	909	90	36	30	16'	272	1,905	207	120	80	19'4"	298	1,280	120	69	40	18'	353-355	5,870	545	282	280	19'
208-210	5,522	604	303	380	19'	238	1,436	173	81	60	16'	273	1,842	204	119	80	19'4"	299	1,245	120	69	40	18'	356	2,391	220	105	90	19'
211	1,093	116	60	50	19'	239	1,436	162	81	60	16'	271-273	5,663	421	222	230	19'4"	298-299	2,525	248	138	110	18'	357	2,437	220	105	100	19'
212	1,160	112	57	50	19'	238-239	2,872	256	156	130	16'	274	1,234	132	72	30	14'1"	333	1,123	71	36	30	16'	356-357	4,828	460	234	230	19'
213	1,209	123	60	50	19'	240	911	68	36	30	16'	275	1,551	163	95	60	14'	334	1,127	76	36	30	16'	383	1,245	114	63	40	18'
211-213	3,462	354	192	210	19'	241	911	68	36	30	16'	276	1,605	163	96	60	14'	333-334	2,250	171	69	90	16'	384	1,287	122	69	40	18'
214	1,828	164	81	120	16'	240-241	1,822	163	63	70	16'	277	1,551	163	95	60	14'	335	1,060	84	48	30	16'	385	1,159	109	51	40	18'
215	1,236	96	51	50	16'	242	1,690	197	99	60	16'	275-277	4,707	473	276	230	14'	336	906	90	36	30	16'	383-385	3,691	414	198	170	18'
216	1,236	92	51	40	16'	243	2,397	260	156	110	22'	278	1,262	128	57	40	13'	335-336	1,966	146	81	70	16'	386	1,485	141	78	50	18'
215-216	2,472	224	105	120	16'	244	2,397	260	156	110	22'	279	1,287	128	57	40	13'	337	911	90	36	30	16'	387	1,419	138	81	50	18'
217	1,795	192	81	100	19'	245	2,333	260	156	110	22'	280	1,287	128	57	40	13'	338	1,433	141	63	60	16'	386-387	2,904	338	168	110	18'
218	1,619	160	81	70	19'	243-245	7,127	772	390	380	22'	281	1,287	128	57	40	13'	339	1,439	130	63	60	16'	388	1,563	163	84	60	18'
219	1,611	169	78	70	19'	252	1,288	136	90	50	19'	282	1,245	128	57	40	13'	338-339	2,872	266	138	130	16'	389	1,607	169	87	60	18'

Classroom capacities are set using 6'x18" tables with 3 seats per table. Round capacities are set as 66" round tables of 10 seats per table at 10' centers. All capacities include minimal audiovisual services.



NEW ORLEANS ERNEST N. MORIAL CONVENTION CENTER

LEED GOLD 2022

FLOORPLANS AND CAPACITIES

mccno.com **BUILT TO HOST** 504-582-3023

THE GREAT HALL

Capacity Specifications

Section	Sq. Ft.	Dimensions	Theater	Classroom	Banquet
A	24,000	171'x131'	2,400	1,333	1,200
B	12,000	82'x131'	1,200	667	600
C	8,000	82'x91'	800	444	400
D	16,300	173'x91'	1,630	906	810
A-B	36,000	253'x131'	3,600	2,000	1,800

LA NOUVELLE ORLEANS BALLROOM

Capacity Specifications

Section	Sq. Ft.	Dimensions	Theater	Classroom	Banquet
A	7,308	174'x45'	812	312	360
A-B	18,224	174'x99'	2,024	1,000	900
C	18,224	174'x107'	2,024	1,000	900
B-C	29,140	174'x154'	3,248	1,664	1,400
A-B-C	36,448	174'x199'	4,050	2,000	1,800

THE NEW ORLEANS THEATER

Capacity Specifications

Section	Floor	Midhouse	Balcony	Total
A	136	681	375	1,192
B	136	689	824	1,449
C	136	681	375	1,192
Full Theater	408	2,050	1,574	4,032

PARKING LOTS

ADA Shuttle Hub
ADA Taxi/Rideshare Zone

SHUTTLE HUB

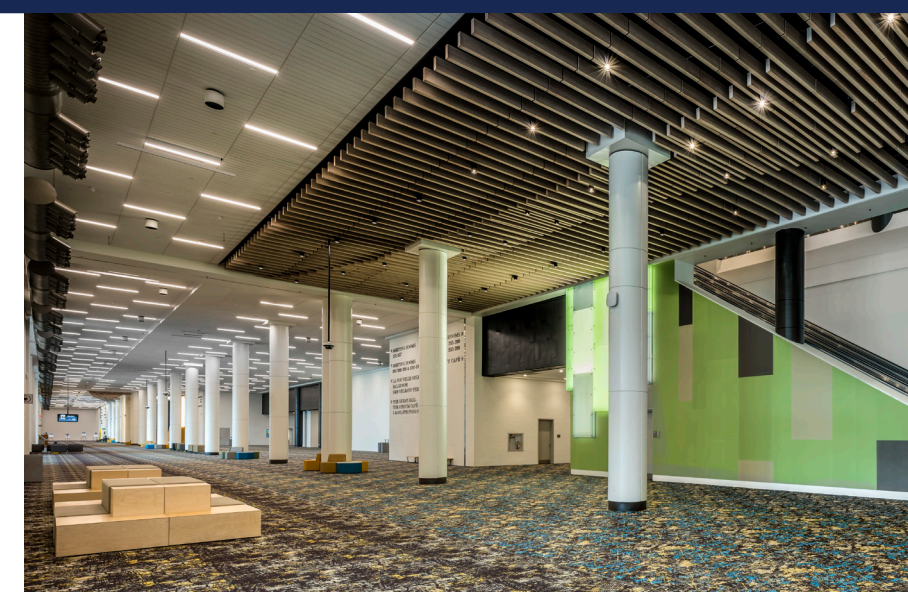
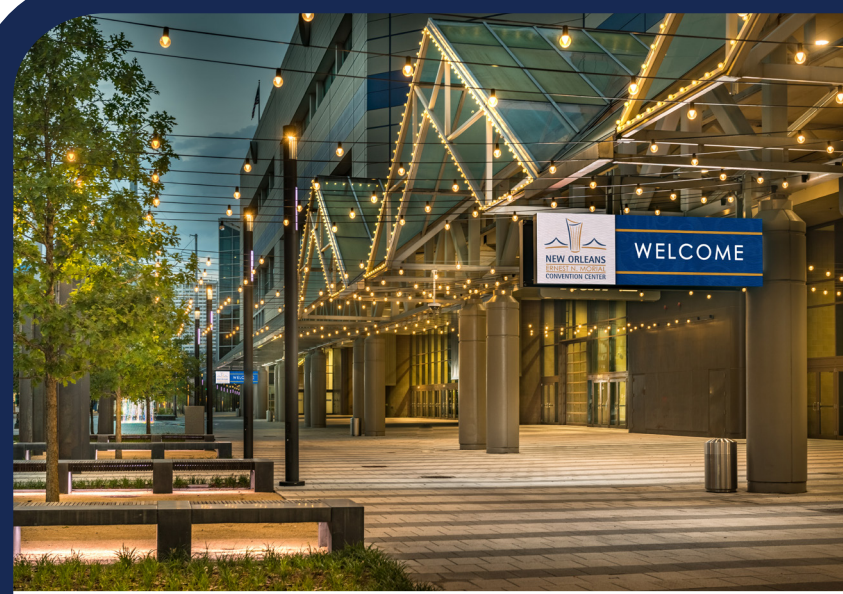
To Hall G
To Taxi/Rideshare

TAXI/RIDESHARE ZONE

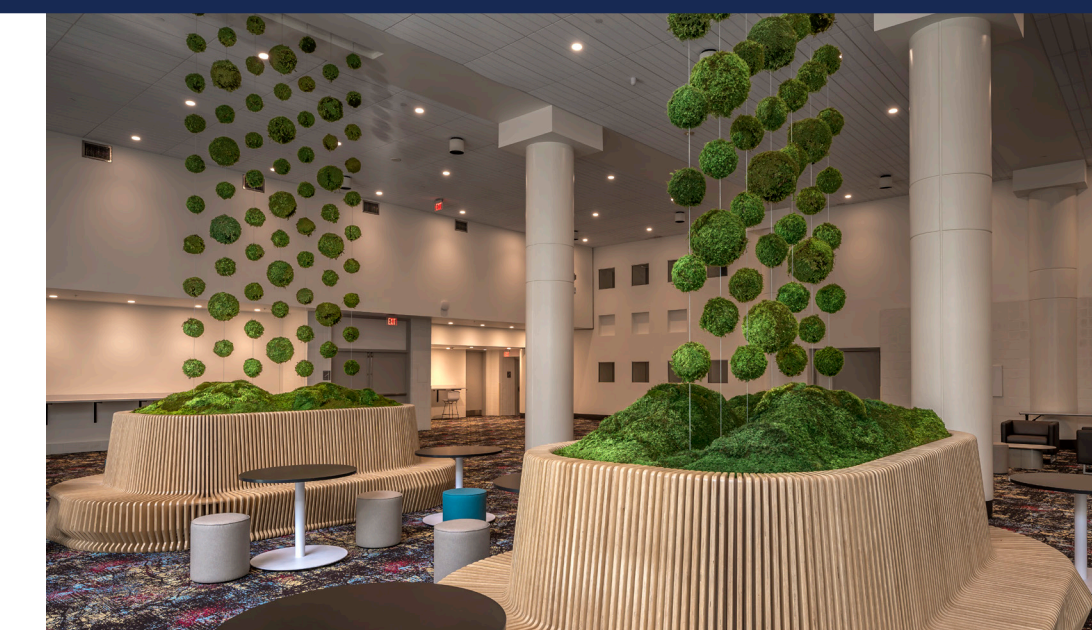
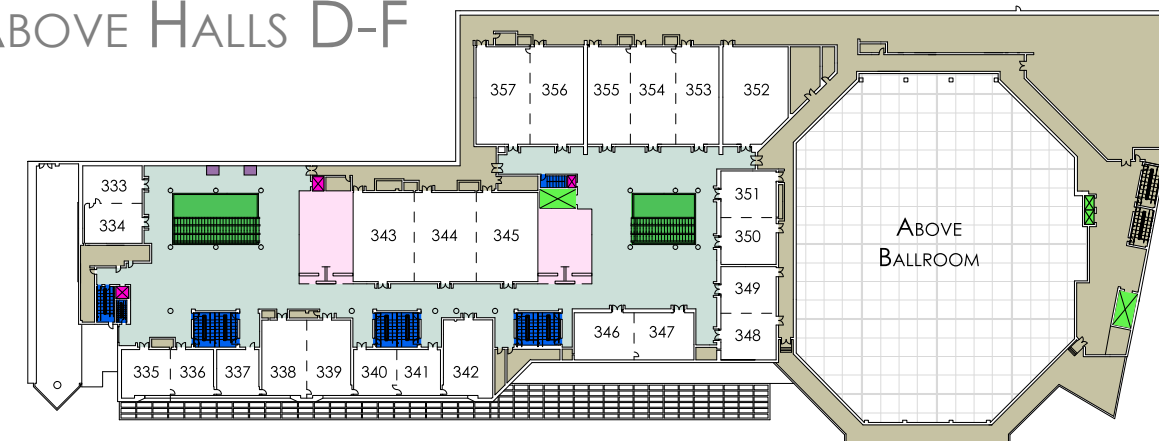
To Shuttle Hub
To Taxi/Rideshare & Lot F Entrance

Exhibit Hall Capacities and Combinations

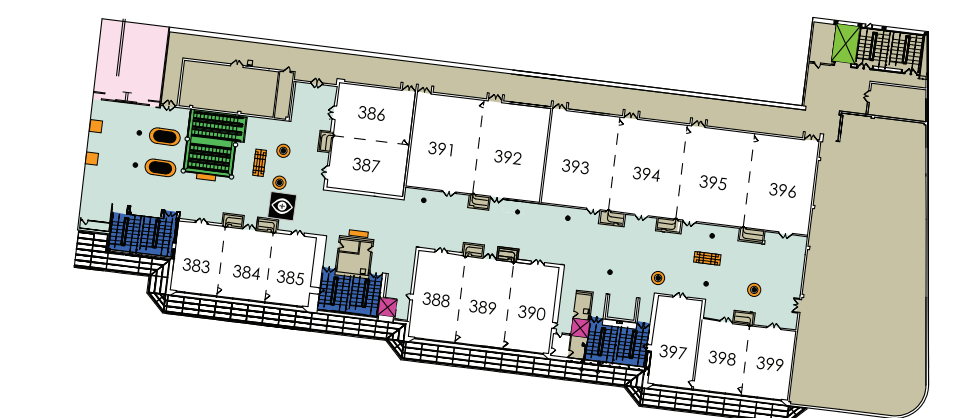
Halls	10'x10'	Sq. Ft.	Halls	10'x10'	Sq. Ft.	Halls	10'x10'	Sq. Ft.
The Great Hall	60,300	BCDE	2,425	455,350	EF	1,761	345,972	
The Great Hall-B1	113,532	BCDEF	3,058	582,237	FGH	2,335	455,172	
The Great Hall-B	179,789	BCDEFG	3,512	673,688	FGHI	2,595	505,572	
The Great Hall-BC	284,651	BCDEFGH	4,086	782,888	FGHI	2,821	547,531	
The Great Hall-BCD	388,016	BCDEFGHI	4,346	833,288	FGHIJ	3,295	638,611	
The Great Hall-BCDE	515,650	BCDEFGHIJ	4,572	875,247	F	633	126,887	
The Great Hall-BCDEF	642,537	BCDEFGHIJ	5,046	966,327	FG	1,087	218,338	
The Great Hall-BCDEFG	733,988	C	548	104,862	FGH	1,661	327,538	
The Great Hall-BCDEFGH	843,188	CD	1,098	208,227	FGHI	1,921	377,938	
The Great Hall-BCDEFGHI	893,588	CDE	1,772	335,861	FGHI	2,147	419,897	
The Great Hall-BCDEFGHIJ	935,547	CDEF	2,405	462,748	FGHIJ	2,621	510,977	
The Great Hall-BCDEFGHIJ	1,026,627	CDEFG	2,859	554,199	G	454	91,451	
B-1	266	CDEFGH	3,433	663,399	GH	1,028	200,451	
B-2	338	CDEFGHI	3,693	713,799	GHI	1,288	251,051	
B2C	886	CDEFGHIJ	3,919	755,758	GHIJ	1,514	293,010	
B2CD	1,436	D	550	103,365	GHIJ	1,988	384,090	
B2CDE	2,110	DE	1,253	230,999	H	574	109,200	
B2CDEF	2,743	DEF	1,886	357,886	HI	834	159,600	
B2CDEFG	3,197	DEFG	2,340	449,337	HIJ	1,060	201,559	
B2CDEFGH	4,031	DEFGH	2,914	558,537	I	260	50,400	
B2CDEFGHI	4,257	DEFGHI	3,174	608,937	I-2	226	41,959	
B2CDEFGHIJ	4,731	DEFGHIJ	3,400	650,896	I2J	700	133,039</	



THIRD FLOOR
ABOVE HALLS D-F



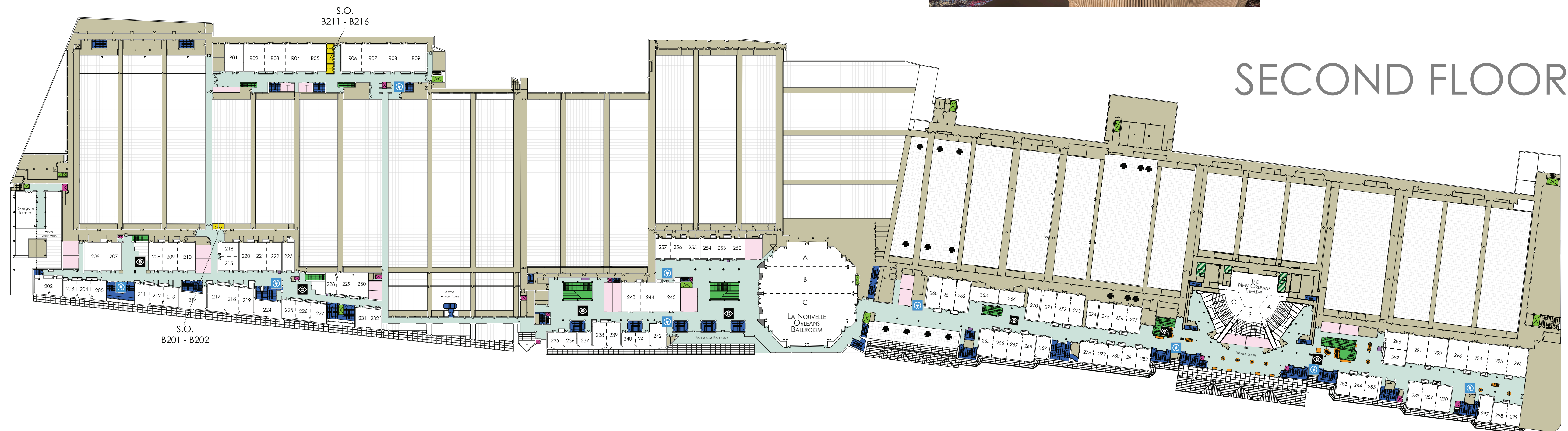
THIRD FLOOR
ABOVE HALLS I-J



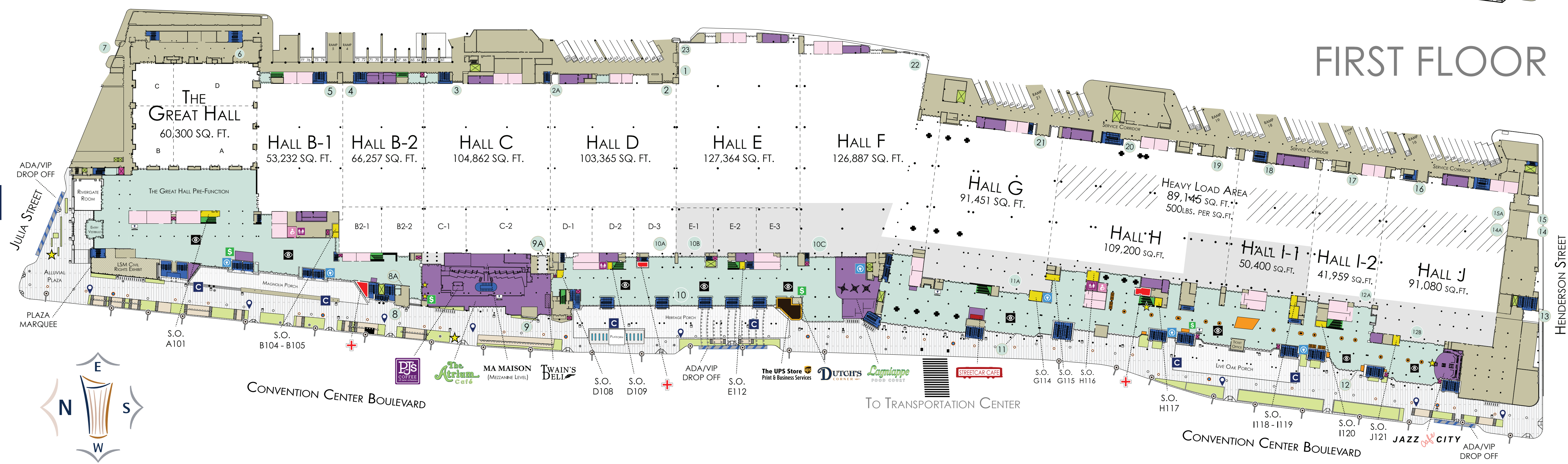
FACILITY KEY

- AIRWALL
- ATM
- COLUMN
- CHARGING STATION
- COMPACTOR
- ESCALATOR
- FAMILY RESTROOM
- FLOOR BELOW
- FOOD SERVICE
- FREIGHT ELEVATOR
- GREEN ROOM
- IRIS POD
- LOBBY
- LOBBY FURNITURE
- LOW CEILING*
- PASSENGER ELEVATOR
- RESTROOM
- SERVICE SPACE
- SHOW OFFICE
- STAIRS
- MOTHER'S ROOM
- MEDICAL STATION

SECOND FLOOR



FIRST FLOOR



PARK KEY

- ART INSTALLATION
- BANNER POLE LOCATION
- BENCH
- BIKE RACK
- CANOPY DIGITAL SCREEN
- CITY POWER POLE
- EMERGENCY PHONE
- FESTOON LIGHTING
- FOUNTAIN
- LIGHT POLE
- PEDESTRIAN WALKWAY
- STATIC DIRECTIONAL SIGN
- WASTE RECEPTACLE

Exhibit Hall Meeting Rooms											
Room	Sq. Ft.	Theater	Room	Sq. Ft.	Theater	Room	Sq. Ft.	Theater	Room	Sq. Ft.	Theater
B2-1	9,509	1,000	C-1	10,741	1,000	D-1	10,249	1,000	E-1	8,750	1,000
B2-2	9,156	1,000	C-2	18,754	2,000	D-2	9,509	1,000	E-2	9,000	1,000
						D-3	9,156	1,000	E-3	9,500	1,000

Exhibit Hall Ceiling Heights			
Halls	Height	Halls	Height
B,C,D,E,G,H,I,J	27' min. under serviceways	F	36' min. under serviceways
	59' to truss peaks	E,F*	26'
	65' to roof peak	G, H, I-1, J*	24'

Terrace, Balcony, & Porch Specifications					
Location	Sq. Ft.	Dimensions	Capacity	Location	Sq. Ft. Dimensions Capacity
Rivergate Terrace	3,420	77'x49'	380	Magnolia Porch	13,120 173'x91' 1,630
Ballroom Balcony	4,220	166'x22'	460	Heritage Porch	39,570 255'x131' 3,600
Theater Balcony	2,652	125'x23'	290	Live Oak Porch	26,116 173'x222' 4,030

*Elements required for food & beverage service may reduce overall capacity in these areas.